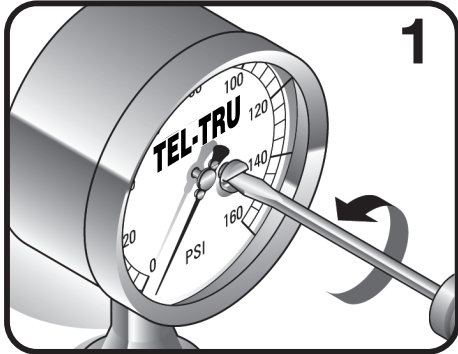
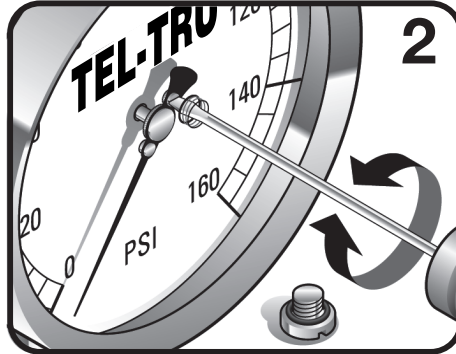


TEL-TRU Sanitary Pressure Gauge Re-Zeroing Procedure

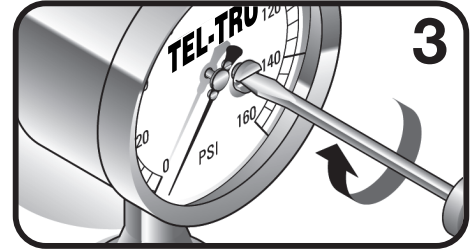
If upon receipt of this gauge the pointer is not indicating Zero, (generally caused by changes in temperature, elevation or barometric pressure) simply follow these directions:



Remove the screw in the lens using a *large* flat bladed screwdriver.
Please Note: A drop or two of liquid may drip out.



Insert a *small* bladed screwdriver into the hole in the lens. **Correct** the pointer position by adjusting the screw on the pointer. If the screw can not be reached, temporarily remove the lens to allow access. Then re-assemble gauge.



Replace screw in lens using a *large* bladed screwdriver.
Please Note: If recalibration is necessary, it is recommended that the gauge be returned to the factory where it will be completely rebuilt and calibrated to original specifications.



TEL-TRU MANUFACTURING CO.
Phone: 800.232.5335 • 585.232.1440 • Fax: 585.232.3857
E-mail: info@teltru.com • Web: www.teltru.com